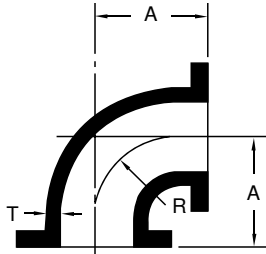




# TERMINAL CITY IRON WORKS LTD.

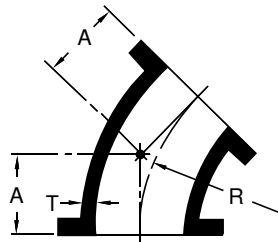
SERVING WESTERN CANADA FOR OVER 100 YEARS

## Ductile Iron Flanged Fittings



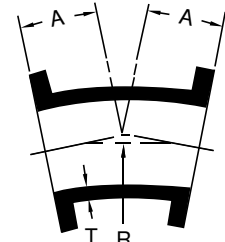
**BENDS, 1/4 (90 DEG)**

Size	Wt.	A	R	T
2	14	4.5	3.0	0.31
2 1/2	22	5.0	3.5	0.31
3	25	5.5	4.0	0.48
4	45	6.5	4.5	0.52
5	52	7.5	5.5	0.52
6	65	8.0	6.0	0.55
8	105	9.0	7.0	0.60
10	165	11.0	9.0	0.68
12	235	12.0	10.0	0.75
14	290	14.0	11.5	0.66
16	370	15.0	12.5	0.70
18	450	16.5	14.0	0.75
20	580	18.0	15.5	0.80
24	900	22.0	18.5	0.89
30	1430	25.0	21.5	1.03
36	2135	28.0	24.5	1.15
42	3055	31.0	27.5	1.28
48	4095	34.0	30.5	1.42



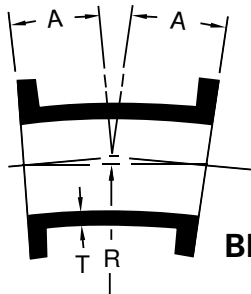
**BENDS, 1/8 (45 DEG)**

Size	Wt.	A	R	T
2	12	2.5	2.41	0.31
2 1/2	18	3.0	3.02	0.31
3	20	3.0	3.62	0.48
4	40	4.0	4.81	0.52
5	45	4.5	6.04	0.52
6	55	5.0	7.25	0.55
8	90	5.5	8.44	0.60
10	130	6.5	10.88	0.68
12	195	7.5	13.25	0.75
14	220	7.5	12.06	0.66
16	280	8.0	13.25	0.70
18	325	8.5	14.50	0.75
20	430	9.5	16.88	0.80
24	630	11.0	18.12	0.89
30	1120	15.0	27.75	1.03
36	1755	18.0	35.00	1.15
42	2600	21.0	42.25	1.28
48	3580	24.0	49.5	1.42



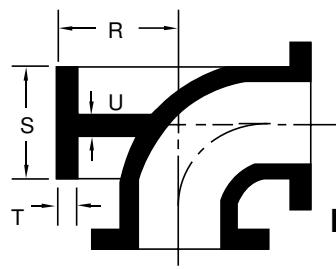
**BENDS, 1/16 (22-1/2 DEG)**

Size	Wt.	A	R	T
2	12	2.5	6.04	0.31
2 1/2	18	3.0	6.80	0.31
3	20	3.0	7.56	0.48
4	40	4.0	10.06	0.52
5	45	4.5	10.86	0.52
6	55	5.0	15.06	0.55
8	90	5.5	17.62	0.60
10	135	6.5	22.62	0.68
12	205	7.5	27.62	0.75
14	225	7.5	25.12	0.66
16	285	8.0	27.62	0.70
18	335	8.5	30.19	0.75
20	435	9.5	35.19	0.80
24	640	11.0	37.69	0.89
30	1135	15.0	57.81	1.03
36	1790	18.0	72.88	1.15
42	2665	21.0	88.00	1.28
48	3665	24.0	103.06	1.42



**BENDS, 1/32 (11-1/4 DEG)**

Size	Wt.	A	R	T
2	12	2.5	12.69	0.31
3	20	3.0	15.25	0.48
4	40	4.0	20.31	0.52
5	45	4.5	22.85	0.52
6	55	5.0	30.50	0.55
8	90	5.5	35.50	0.60
10	135	6.5	45.69	0.68
12	205	7.5	55.81	0.75
14	225	7.5	50.75	0.66
16	285	8.0	55.81	0.70
18	335	8.5	60.94	0.75
20	435	9.5	71.06	0.80
24	645	11.0	76.12	0.89
30	1150	15.0	116.75	1.03
36	1805	18.0	147.25	1.15
42	2680	21.0	177.69	1.28
48	3695	24.0	208.12	1.42



**BASE BENDS**

Size	Weight		R	S	T	U	BC
	Base Bend	Base Only					
3	35	10	4.88	5.00	0.56	0.50	3.88
4	55	10	5.50	6.00	0.62	0.50	4.75
6	85	20	7.00	7.00	0.69	0.62	5.50
8	145	40	8.38	9.00	0.94	0.88	7.50
10	210	45	9.75	9.00	0.94	0.88	7.50
12	300	65	11.25	11.00	1.00	1.00	9.50
14	360	70	12.50	11.00	1.00	1.00	9.50
16	445	75	13.75	11.00	1.00	1.00	9.50
18	565	115	15.00	13.50	1.12	1.12	11.75
20	700	120	16.00	13.50	1.12	1.12	11.75
24	1030	130	18.50	13.50	1.12	1.12	11.75
30	1625	190	23.00	16.00	1.19	1.15	14.25
36	2385	250	26.00	19.00	1.25	1.15	17.00
42	3465	410	30.00	23.50	1.44	1.28	21.25
48	4610	515	34.00	25.00	1.56	1.42	22.75

ANSI/AWWA C110/A21.10

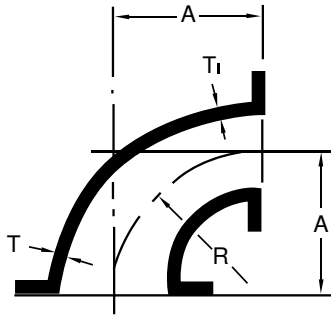
Dimensions in inches.  
Weights in pounds.



# TERMINAL CITY IRON WORKS LTD.

SERVING WESTERN CANADA FOR OVER 100 YEARS

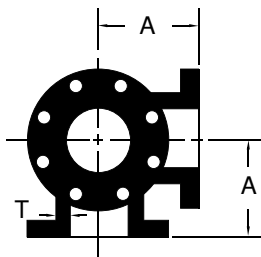
## Ductile Iron Flanged Fittings



### REDUCING 90 DEG. BENDS

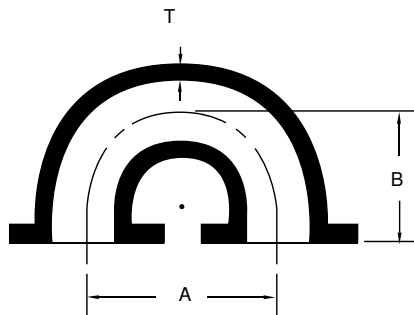
Size	Wt.	A	R	T	T1
2 1/2x2	18	5.0	3.5	0.31	0.31
3x2	22	5.5	4.0	0.48	0.31
3x2 1/2	23	5.5	4.0	0.48	0.31
4x2	27	6.6	4.5	0.52	0.31
4x2 1/2	29	6.6	4.5	0.52	0.31
4x3	29	6.6	4.5	0.52	0.48
5x4	51	7.5	5.5	0.52	0.52
6x3	45	8.0	6.0	0.55	0.48
6x4	55	8.0	6.0	0.55	0.52
6x5	65	8.0	6.0	0.55	0.52
8x4	75	9.0	7.0	0.60	0.52
8x5	80	9.0	7.0	0.60	0.52
8x6	85	9.0	7.0	0.60	0.55
10x4	110	11.0	9.0	0.68	0.52
10x6	135	11.0	9.0	0.68	0.55
10x8	150	11.0	9.0	0.68	0.60
12x4	140	12.0	10.0	0.75	0.52
12x6	160	12.0	10.0	0.75	0.55
12x8	180	12.0	10.0	0.75	0.60
12x10	210	12.0	10.0	0.75	0.68
14x6	144	14.0	11.5	0.66	0.55
14x8	200	14.0	11.5	0.66	0.60
14x10	240	14.0	11.5	0.66	0.68
14x12	270	14.0	11.5	0.66	0.75
16x6	220	15.0	12.5	0.70	0.55
16x8	240	15.0	12.5	0.70	0.60
16x10	280	15.0	12.5	0.70	0.68
16x12	310	15.0	12.5	0.70	0.75
16x14	330	15.0	12.5	0.70	0.66
18x6	260	16.5	14.0	0.75	0.55
18x8	280	16.5	14.0	0.75	0.60
18x10	320	16.5	14.0	0.75	0.68
18x12	350	16.5	14.0	0.75	0.75
18x14	370	16.5	14.0	0.75	0.66
18x16	410	16.5	14.0	0.75	0.70
20x6	320	18.0	15.5	0.80	0.55
20x8	345	18.0	15.5	0.80	0.60

Size	Wt.	A	R	T	T1
20x10	385	18.0	15.5	0.80	0.68
20x12	415	18.0	15.5	0.80	0.75
20x14	435	18.0	15.5	0.80	0.66
20x16	475	18.0	15.5	0.80	0.70
20x18	515	18.0	15.5	0.80	0.75
24x6	480	22.0	18.5	0.89	0.55
24x8	505	22.0	18.5	0.89	0.60
24x10	545	22.0	18.5	0.89	0.68
24x12	575	22.0	18.5	0.89	0.75
24x14	595	22.0	18.5	0.89	0.66
24x16	635	22.0	18.5	0.89	0.70
24x18	675	22.0	18.5	0.89	0.75
24x20	740	22.0	18.5	0.89	0.80
30x12	840	25.0	21.5	1.03	0.75
30x14	860	25.0	21.5	1.03	0.66
30x16	900	25.0	21.5	1.03	0.70
30x18	940	25.0	21.5	1.03	0.75
30x20	1005	25.0	21.5	1.03	0.80
30x24	1165	25.0	21.5	1.03	0.89
36x12	1195	28.0	24.5	1.15	0.75
36x14	1215	28.0	24.5	1.15	0.66
36x16	1255	28.0	24.5	1.15	0.70
36x18	1295	28.0	24.5	1.15	0.75
36x20	1360	28.0	24.5	1.15	0.80
36x24	1520	28.0	24.5	1.15	0.89
36x30	1785	28.0	24.5	1.15	1.03
42x14	1675	31.0	27.5	1.28	0.66
42x16	1715	31.0	27.5	1.28	0.70
42x18	1755	31.0	27.5	1.28	0.75
42x20	1820	31.0	27.5	1.28	0.80
42x24	1980	31.0	27.5	1.28	0.89
42x30	2245	31.0	27.5	1.28	1.03
42x36	2600	31.0	27.5	1.28	1.15
48x24	3240	34.0	30.5	1.42	0.89
48x30	3600	34.0	30.5	1.42	1.03
48x36	3255	34.0	30.5	1.42	1.15
48x42	4685	34.0	30.5	1.42	1.28



### SIDE OUTLET BENDS

Size	Wt.	A	T
3	36	5.5	0.48
4	60	6.5	0.50
6	96	8.0	0.55
8	150	9.0	0.60
10	235	11.0	0.68
12	335	12.0	0.80
14	405	14.0	0.66
16	490	15.0	0.70
18	580	16.5	0.75
20	740	18.0	0.80
24	1145	22.0	0.89



### RETURN BENDS

Size	Wt.	A	B	T
4	60	10	6.5	0.52
6	95	12	8.0	0.55
8	165	18	9.0	0.60
10	260	20	11.0	0.68
12	395	24	12.0	0.75

ANSI/AWWA C110/A21.10

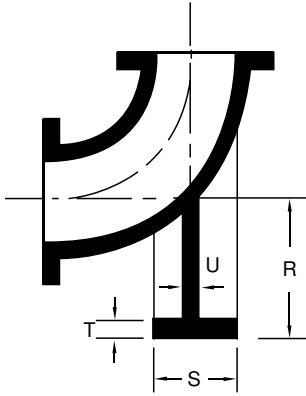
Dimensions in inches.  
Weights in pounds.



# TERMINAL CITY IRON WORKS LTD.

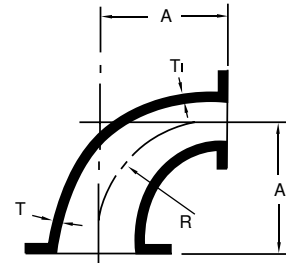
SERVING WESTERN CANADA FOR OVER 100 YEARS

## Ductile Iron Flanged Fittings



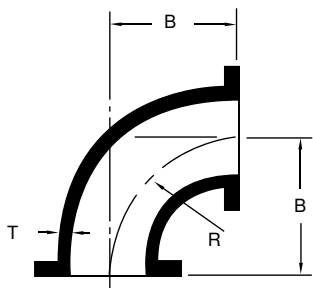
**LONG RADIUS BASE BENDS**

Size	Weight		R	S	T	U	BC
	Base Bend	Base Only					
3	48	18	4.88	5.0	0.56	0.50	3.88
4	73	23	5.50	6.0	0.62	0.50	4.75
6	120	40	7.00	7.0	0.69	0.62	5.50
8	205	65	8.38	9.0	0.94	0.88	7.50
10	295	80	9.75	9.0	0.94	0.88	7.50
12	435	95	11.25	11.0	1.00	1.00	9.50
14	490	105	12.50	11.0	1.00	1.00	9.50
16	615	110	13.75	11.0	1.00	1.00	9.50
18	800	170	15.00	13.5	1.12	1.12	11.75
20	985	175	16.00	13.5	1.12	1.12	11.75
24	1430	190	18.50	13.5	1.12	1.12	11.75
30	2400	295	23.00	16.0	1.19	1.15	14.25
36	3680	395	26.00	19.0	1.25	1.15	17.00



**LONG RADIUS REDUCING BENDS**

Size	Wt.	A	T	T1	R
4x3	32	9.0	0.52	0.48	7.0
6x4	61	11.5	0.55	0.52	9.5
8x4	100	14.0	0.60	0.52	12.0
8x6	110	14.0	0.60	0.55	12.0
10x4	195	16.5	0.68	0.52	14.5
10x6	180	16.5	0.68	0.55	14.5
10x8	215	16.5	0.68	0.60	14.5
12x6	235	19.0	0.75	0.55	17.0
12x8	285	19.0	0.75	0.60	17.0
12x10	325	19.0	0.75	0.68	17.0
14x8	285	21.5	0.66	0.60	19.0
14x10	325	21.5	0.66	0.68	19.0
14x12	370	21.5	0.66	0.75	19.0
16x8	395	24.0	0.70	0.60	21.5
16x10	395	24.0	0.70	0.68	21.5
16x12	415	24.0	0.70	0.75	21.5
16x14	460	24.0	0.70	0.66	21.5
18x10	465	26.5	0.75	0.68	24.0
18x12	585	26.5	0.96	0.75	24.0
18x14	535	26.5	0.75	0.66	24.0
18x16	585	26.5	0.75	0.70	24.0
20x10	640	29.0	0.80	0.68	26.5
20x12	630	29.0	0.80	0.75	26.5
20x14	770	29.0	0.80	0.66	26.5
20x16	695	29.0	0.80	0.70	26.5
20x18	905	29.0	0.80	0.75	26.5
24x12	855	34.0	0.89	0.75	30.5
24x14	875	34.0	0.89	0.66	30.5
24x16	940	34.0	0.89	0.70	30.5
24x20	1080	34.0	0.89	0.80	30.5
30x16	1400	41.5	1.03	0.70	38.0
30x20	1575	41.5	1.03	0.80	38.0
30x24	1675	41.5	1.37	1.16	38.0
36x20	2835	49.0	1.15	0.80	45.5
36x24	3140	49.0	1.15	0.89	45.5
36x30	3675	49.0	1.58	1.37	45.5
42x30	4905	56.5	1.28	1.03	53.0
42x36	4270	56.5	1.28	1.15	53.0



**LONG RADIUS BENDS**

Size	Wt.	B	T	R
2	20	6.50	0.31	5.0
2 1/2	22	7.00	0.31	6.0
3	30	7.75	0.48	6.0
4	50	9.00	0.52	7.0
6	80	11.50	0.55	9.5
8	140	14.00	0.60	12.0
10	215	16.50	0.68	14.5
12	325	19.00	0.75	17.0
14	385	21.50	0.66	19.0
16	505	24.00	0.70	21.0
18	630	26.50	0.75	24.0
20	810	29.00	0.80	26.5
24	1240	34.00	0.89	30.5
30	2105	41.50	1.03	38.0
36	3285	49.00	1.15	45.5
45	4865	56.50	1.28	53.0

ANSI/AWWA C110/A21.10

Dimensions in inches.  
Weights in pounds.