

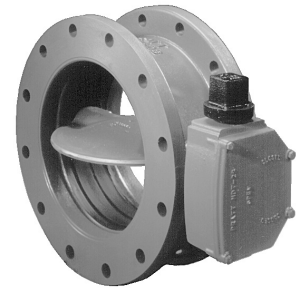
# MUELLER® LINESEAL III® BUTTERFLY VALVES (Class 150B) 3" - 48"\*

**Mueller Co.**

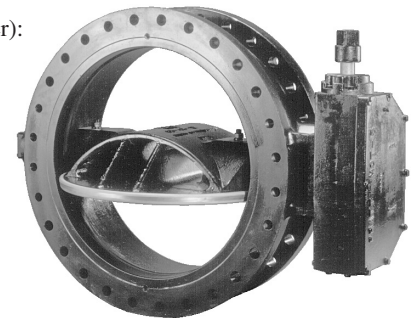
**11.3**

Rev. 9-09

- ❑ Catalog number--
  - 3211-6** Flanged Ends Class 125  
Sizes--3", 4", 6", 8", 10", 12", 14", 16", 18", 20", 24", 30", 36", 42", 48"
  - 3211-20** Mechanical joint ends (with mechanical joint unassembled accessories)  
Sizes--4", 6", 8", 10", 12", 14", 16", 18", 20", 24", 30", 36", 42", 48"
  - 3211-23** Mechanical joint ends (without mechanical joint accessories)  
Sizes--4", 6", 8", 10", 12", 14", 16", 18", 20", 24", 30", 36", 42", 48"
  - 3211-16** Flanged Class 125 by mechanical joint ends (with mechanical joint unassembled accessories)  
Sizes--6", 8", 10", 12", 14", 16", 18", 20", 24", 30", 36
  - 3211-19** Flanged Class 125 by mechanical joint ends (without mechanical joint unassembled accessories)  
Sizes--6", 8", 10", 12", 14", 16", 18", 20", 24", 30", 36
  - 3211-41** Flanged Class 125 by slip-on  
Sizes--12", 16"
  - 3211-38** Slip-on by slip-on  
Sizes--12", 16"
- ❑ Meets or exceeds all applicable requirements of ANSI/AWWA C504 Standard Class 150B; NSF 61 certified
- ❑ Buried service valves: I.D. and O.D. coated
- ❑ Body - Cast Iron ASTM A-126
- ❑ Flanges drilled per ANSI B16.1 Class 125
- ❑ Above ground valves (ordered with either a handwheel, position indicator on the actuator, or lever): minimum 4 mills epoxy coated interior and exterior; meets AWWA C504 standard.
- ❑ Seat-in-body design reduces seat failure due to corrosive buildup in the valve and pipeline
- ❑ Through-disc pinning provides a tight disc-to-shaft pin connection, greatly reducing the possibility of loosening through vibration
- ❑ Disc edge is 316 Stainless Steel
- ❑ Disc - Cast Iron ASTM A-126 (3", 4", 6" Stainless Steel ASTM A-743 CF8M)
- ❑ Symmetrical disc for higher Cv and lower head loss
- ❑ Nonmetallic bearings prevent galvanic corrosion and provides lower coefficient of friction
- ❑ Chevron "V" type packing is self-adjusting to last the life of the valve
- ❑ 3"-24" Standard 304 SS hardware.



**3"-20"**



**24"-48"**

## Options

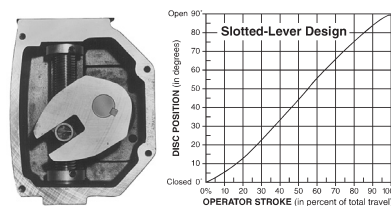
- ❑ MDT Actuator with handwheel or chainwheel and position indicator
- ❑ MDT Actuator with cylinder actuator (also available with manual override, handjack and 4-way solenoid valve)
- ❑ Hand lever for 3"-10" valves
- ❑ 200 psi test
- ❑ EPDM Rubber seat and seals
- ❑ 316 Stainless steel fasteners
- ❑ Additional 4 mills minimum Epoxy interior and/or exterior
- ❑ Holiday testing
- ❑ Ground level position indicator

## Standard Buried Service Actuators

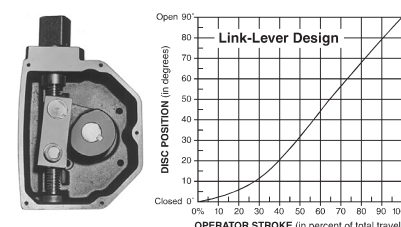
Note: Actuator size subject to change based on actual pipeline conditions.

Valve size	Actuator	Number of turns
3"-12"	MDT-2S	32
14"-16"	MDT-3S	30
18"-24"	MDT-4S	40
30"-36"	MDT-5	44
42"	MDT-5S	136
48"	MDT-6S	215

### Slotted-Lever (3"-12")



### Link-Lever (14"-48")



\*Contact your Mueller representative for valve sizes larger than 48".