

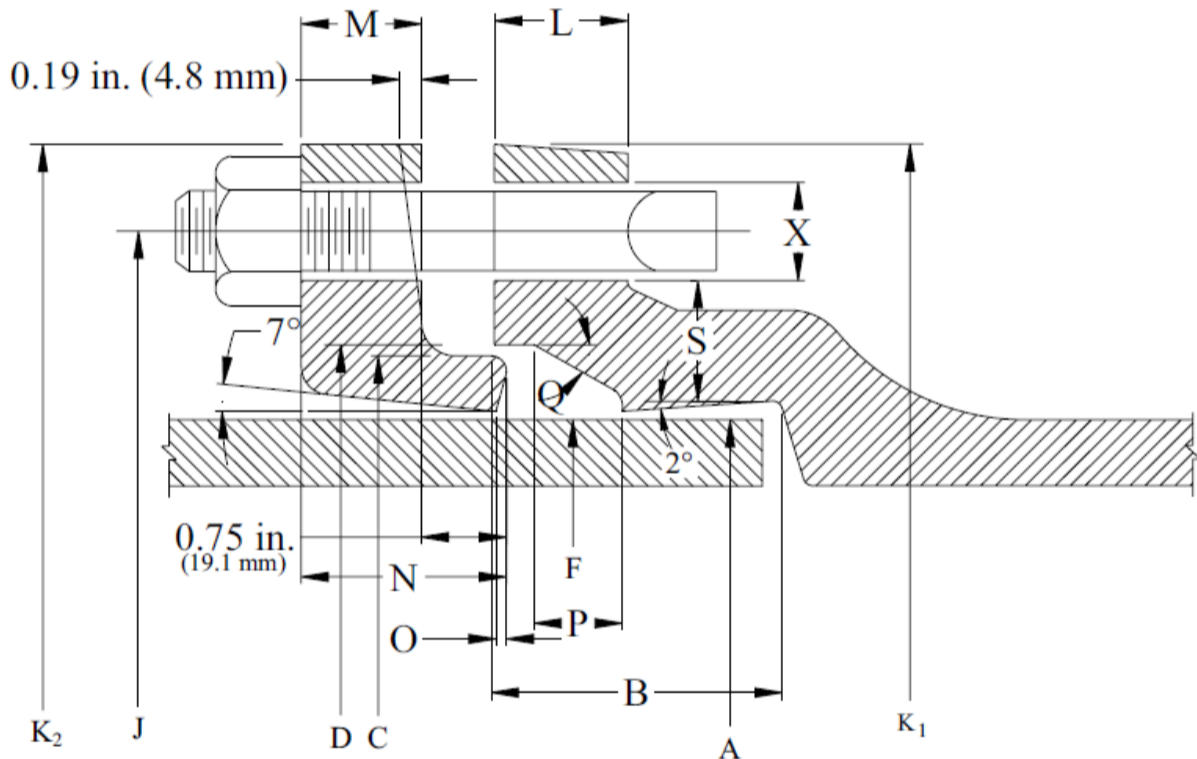


TERMINAL CITY IRON WORKS LTD.

DUCTILE IRON MECHANICAL JOINT | COMPACT FITTINGS

BASIC SPECIFICATIONS

MATERIAL	Ductile Iron ASTM A536
PRESSURE	DI: 3" - 24" 350 psi and 30" - 48" 250 psi
TESTING	In accordance with ANSI/AWWA C153/A21.53 and UL requirement
LAYING LENGTH	In accordance with ANSI/AWWA C153/A21.53
WEIGHTS	Do not include accessories, cement lining and coatings
FLANGES	Flanged ends on fittings match ANSI/AWWA C115/A21.15 & ANSI B16.1 class 125 flanges
CEMENT LINING	In accordance with ANSI/AWWA C104/A21.4
COATING	Asphaltic seal coat inside and out in accordance with ANSI/AWWA C104/A21.4
GASKETS	SBR in accordance with ANSI/AWWA C111/A21.11
T-BOLTS/NUTS	Low alloy steel in accordance with ANSI/AWWA C111/A21.11
APPROVALS	4"-24" Underwriters Laboratories listed. NSF 61.



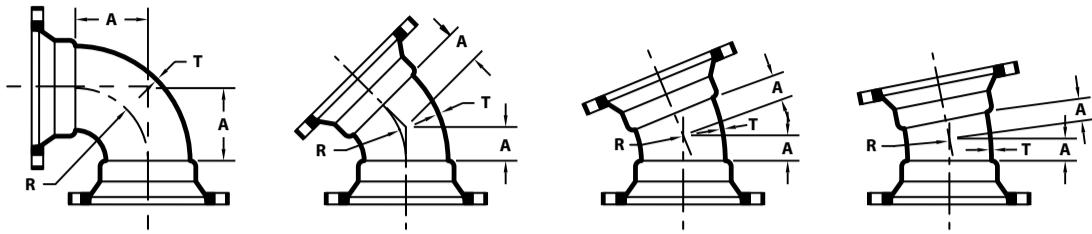
MECHANICAL JOINT DIMENSIONS

SIZE	A	B	C	D	F	J	K ₂	K ₁	L	X	BOLTS		
											No	Size	Length
3	3.96	2.50	4.84	4.94	4.06	6.19	7.69	7.62	0.58	3/4	4	5/8	3
4	4.80	2.50	5.92	6.02	4.90	7.50	9.12	9.06	0.60	7/8	4	3/4	3 1/2
6	6.90	2.50	8.02	8.12	7.00	9.50	11.12	11.06	0.63	7/8	6	3/4	3 1/2
8	9.05	2.50	10.17	10.27	9.15	11.75	13.37	13.31	0.66	7/8	6	3/4	3 1/2
10	11.10	2.50	12.22	12.34	11.20	14.00	15.62	15.62	0.70	7/8	8	3/4	4
12	13.20	2.50	14.32	14.44	13.30	16.25	17.88	17.88	0.73	7/8	8	3/4	4
14	15.30	3.50	16.40	16.54	15.44	18.75	20.25	20.25	0.79	7/8	10	3/4	4 1/2
16	17.40	3.50	18.50	18.64	17.54	21.00	22.50	22.50	0.85	7/8	12	3/4	4 1/2
18	19.50	3.50	20.60	20.74	19.64	23.25	24.83	24.75	1.00	7/8	12	3/4	4 1/2
20	21.60	3.50	22.70	22.84	21.74	25.50	27.08	27.00	1.02	7/8	14	3/4	4 1/2
24	25.80	3.50	26.90	27.04	25.94	30.00	31.58	31.50	1.02	7/8	16	3/4	5
30	32.00	4.00	33.29	33.46	32.17	36.88	39.12	39.12	1.31	1 1/8	20	1	6
36	38.30	4.00	39.59	39.76	38.47	43.75	46.00	46.00	1.45	1 1/8	24	1	6
42	44.50	4.00	45.79	45.96	44.67	50.62	53.12	53.12	1.45	1 3/8	28	1 1/4	6 1/2
48	50.80	4.00	52.09	52.26	50.97	57.50	60.00	60.00	1.45	1 3/8	32	1 1/4	6 1/2

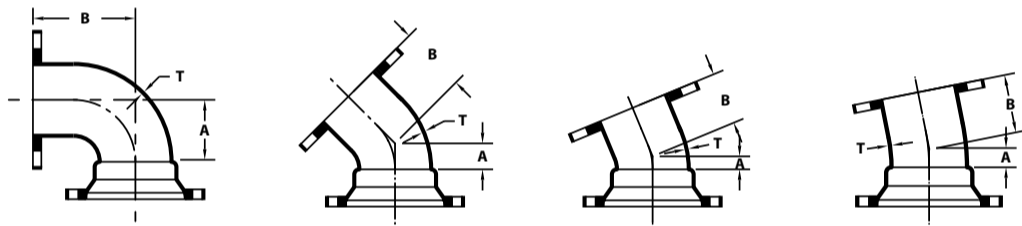


TERMINAL CITY IRON WORKS LTD.

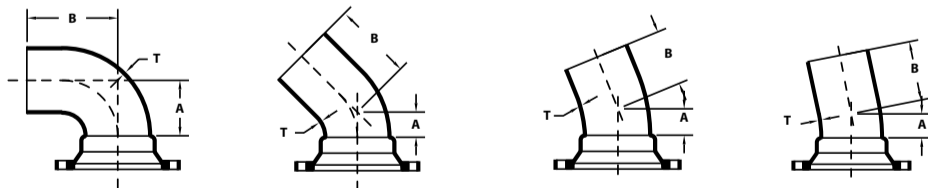
COMPACT MECHANICAL JOINT FITTINGS | ANSI / AWWA C153 / A21.53



MJ X MJ BENDS									
SIZE	T	MJB		MJB		MJB		MJB	
		90°		45°		22 1/2°		11 1/4°	
		A	Wt.	A	Wt.	A	Wt.	A	Wt.
2	0.30	3.25	13	1.80	11	1.00	12	1.00	13
3	0.33	3.50	19	1.50	15	1.00	14	1.00	14
4	0.34	4.00	24	2.00	20	1.50	18	1.25	16
6	0.36	5.00	41	3.00	34	2.00	32	1.50	31
8	0.38	6.50	61	3.50	48	2.50	46	1.75	42
10	0.40	7.50	90	4.50	75	3.00	68	2.00	58
12	0.42	9.00	128	5.50	110	3.50	92	2.25	74
14	0.47	11.50	219	5.00	170	3.75	145	2.50	140
16	0.50	12.50	293	5.50	214	3.75	178	2.50	157
18	0.54	14.00	333	6.00	253	4.50	254	3.00	205
20	0.57	15.00	393	7.00	305	4.50	310	3.00	270
24	0.61	18.75	630	7.50	405	4.50	400	3.00	315
30	0.66	21.50	1085	10.50	750	6.75	616	4.75	600
36	0.74	24.50	—	11.50	1125	7.75	—	5.00	—



MJ X FL BENDS													
SIZE	T	MJFB			MJFB			MJFB			MJFB		
		90°			45°			22 1/2°			11 1/4°		
		A	S	Wt.	A	S	Wt.	A	S	Wt.	A	S	Wt.
3	0.33	3.50	5.50	20	1.50	3.00	19	1.00	3.00	26	1.00	3.00	—
4	0.34	4.00	6.50	26	2.00	4.00	25	1.50	4.00	32	1.25	4.00	28
6	0.36	5.00	8.00	47	3.50	5.00	37	2.00	5.00	41	1.50	5.00	40
8	0.38	6.50	9.00	82	3.50	5.50	71	2.50	5.50	64	1.75	5.50	53
10	0.40	7.50	11.00	115	4.50	6.50	103	3.00	6.50	92	2.00	6.50	88
12	0.42	9.00	12.00	163	5.50	7.50	151	3.50	7.50	132	2.25	7.50	114
14	0.47	11.50	14.00	275	5.00	7.50	199	3.75	7.50	215	2.50	7.50	210
16	0.50	12.50	15.00	335	5.50	8.00	311	3.75	8.00	285	2.50	8.00	230
18	0.54	14.00	16.50	468	6.00	8.50	320	6.00	8.50	303	6.00	8.50	294
20	0.57	15.00	18.00	553	7.00	9.50	431	7.00	9.50	362	7.00	9.50	338
24	0.61	17.00	22.00	690	7.50	11.00	575	7.50	11.00	485	7.50	11.00	488



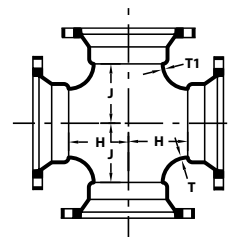
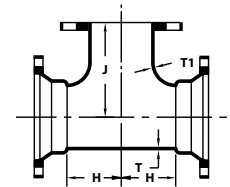
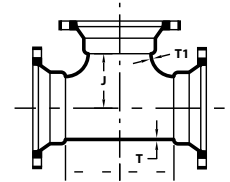
MJ X PE BENDS													
SIZE	T	MJPB			MJPB			MJPB			MJPB		
		90°			45°			22 1/2°			11 1/4°		
		A	S	Wt.	A	S	Wt.	A	S	Wt.	A	S	Wt.
3	0.33	3.50	8.50	18	1.50	7.00	15	1.00	6.50	15	1.00	6.50	15
4	0.34	4.00	8.50	24	2.00	7.50	20	1.50	7.00	18	1.25	6.25	17
6	0.36	5.00	9.50	40	3.00	8.50	34	2.00	7.50	31	1.50	7.00	29
8	0.38	6.50	11.50	57	3.50	9.00	48	2.50	8.00	48	1.75	7.25	45
10	0.40	7.50	12.50	88	4.50	10.00	70	3.00	8.50	63	2.00	7.50	56
12	0.42	9.00	13.00	114	5.50	11.00	98	3.50	9.00	82	2.25	7.75	71
14	0.47	11.50	14.50	—	5.00	13.00	199	3.75	11.25	—	2.50	10.50	—
16	0.50	12.50	19.50	302	5.50	13.50	206	3.75	11.75	255	2.50	10.50	165
18	0.54	14.00	20.50	—	6.00	13.00	—	6.00	13.00	—	6.00	13.00	—
20	0.57	15.00	21.00	—	7.00	14.00	—	7.00	14.00	—	7.00	14.00	—
24	0.61	17.00	22.50	—	7.50	14.50	390	7.50	14.50	—	7.50	14.50	—



TERMINAL CITY IRON WORKS LTD.

COMPACT MECHANICAL JOINT FITTINGS | ANSI / AWWA C153 / A21.53

SIZE	T	T1	MJ X MJ TEES			MJ X FL TEES			MJ X MJ CROSS		
			MJT			MJFT			MJX		
			H	J	Wt.	H	J	Wt.	H	J	Wt.
2x2	0.39	0.39	3.25	3.25	22	—	—	—	—	—	—
3x2	0.48	0.39	3.50	3.50	24	—	—	—	—	—	—
3x3	0.48	0.48	5.50	5.50	29	5.50	5.00	32	5.50	5.50	33
4x2	0.52	0.39	4.00	4.00	45	—	—	—	—	—	—
4x3	0.52	0.48	6.50	6.50	30	6.50	6.00	36	6.50	6.50	40
4x4	0.52	0.52	6.50	6.50	32	6.50	6.50	40	6.50	6.50	45
6x2	0.55	0.39	8.00	8.00	66	—	—	—	—	—	—
6x3	0.55	0.48	8.00	8.00	45	8.00	6.00	53	—	—	—
6x4	0.55	0.52	8.00	8.00	46	8.00	8.00	55	8.00	8.00	62
6x4x6	0.55	0.52	8.00	8.00	50	—	—	—	—	—	—
6x6	0.55	0.55	8.00	8.00	56	8.00	8.00	63	8.00	8.00	73
8x3	0.60	0.48	9.00	9.00	55	—	—	—	—	—	—
8x4	0.60	0.52	9.00	9.00	60	9.00	9.00	75	9.00	9.00	76
8x6	0.60	0.55	9.00	9.00	72	9.00	9.00	80	9.00	9.00	100
8x8	0.60	0.60	9.00	9.00	86	9.00	9.00	98	9.00	9.00	105
10x3	0.68	0.48	11.00	11.00	77	—	—	—	—	—	—
10x4	0.68	0.52	11.00	11.00	78	11.00	11.00	90	11.00	11.00	95
10x6	0.68	0.55	11.00	11.00	90	11.00	11.00	112	11.00	11.00	125
10x8	0.68	0.60	11.00	11.00	105	11.00	11.00	121	11.00	11.00	128
10x10	0.68	0.68	11.00	11.00	115	11.00	11.00	154	11.00	11.00	148
12x3	0.75	0.48	12.00	12.00	101	—	—	—	—	—	—
12x4	0.75	0.52	12.00	12.00	102	12.00	12.00	118	12.00	12.00	116
12x6	0.75	0.55	12.00	12.00	110	12.00	12.00	120	12.00	12.00	136
12x8	0.75	0.60	12.00	12.00	125	12.00	12.00	138	12.00	12.00	147
12x10	0.75	0.68	12.00	12.00	140	12.00	12.00	158	12.00	12.00	159
12x12	0.75	0.75	12.00	12.00	160	12.00	12.00	198	12.00	12.00	198
14x6	0.66	0.55	14.00	14.00	183	14.00	14.00	202	14.00	14.00	208
14x8	0.66	0.60	14.00	14.00	211	14.00	14.00	232	14.00	14.00	235
14x10	0.66	0.68	14.00	14.00	228	14.00	14.00	290	—	—	—
14x12	0.66	0.75	14.00	14.00	245	14.00	14.00	315	14.00	14.00	325
14x14	0.66	0.66	14.00	14.00	282	14.00	14.00	338	—	—	—
16x6	0.70	0.55	15.00	15.00	221	15.00	15.00	249	15.00	15.00	250
16x8	0.70	0.60	15.00	15.00	248	15.00	15.00	276	15.00	15.00	268
16x10	0.70	0.68	15.00	15.00	264	15.00	15.00	330	15.00	15.00	275
16x12	0.70	0.75	15.00	15.00	300	15.00	15.00	340	15.00	15.00	340
16x14	0.70	0.66	15.00	15.00	345	15.00	15.00	347	—	—	—
16x16	0.70	0.70	15.00	15.00	376	15.00	15.00	470	15.00	15.00	448

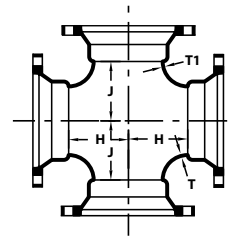
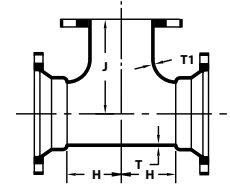
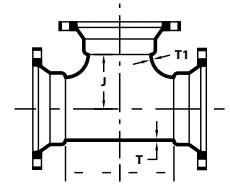




TERMINAL CITY IRON WORKS LTD.

COMPACT MECHANICAL JOINT FITTINGS | ANSI / AWWA C153 / A21.53

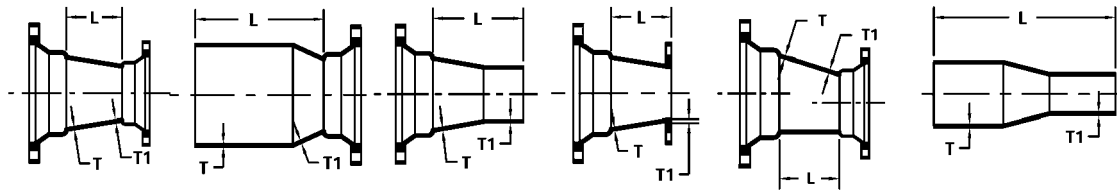
SIZE	T	T1	MJ X MJ TEES			MJ X FL TEES			MJ X MJ CROSS		
			MJT			MJFT			MJX		
			H	J	Wt.	H	J	Wt.	H	J	Wt.
18x4	0.75	0.52	13.00	15.50	241	—	—	—	—	—	—
18x6	0.75	0.55	13.00	15.50	272	13.00	15.50	258	—	—	—
18x8	0.75	0.60	13.00	15.50	282	13.00	15.50	337	—	—	—
18x10	0.75	0.68	13.00	15.50	283	13.00	15.50	360	—	—	—
18x12	0.75	0.75	13.00	15.50	376	13.00	15.50	396	13.00	15.50	437
18x14	0.75	0.66	13.00	15.50	425	—	—	—	—	—	—
18x16	0.75	0.70	13.00	15.50	444	—	—	—	—	—	—
18x18	0.75	0.75	13.00	16.50	482	16.50	16.50	500	13.00	16.50	569
20x6	0.80	0.55	14.00	17.00	331	14.00	17.00	360	—	—	—
20x8	0.80	0.60	14.00	17.00	372	14.00	17.00	384	14.00	17.00	440
20x10	0.80	0.68	14.00	17.00	398	14.00	17.00	418	—	—	—
20x12	0.80	0.75	14.00	17.00	418	14.00	17.00	486	14.00	17.00	470
20x14	0.80	0.66	14.00	17.00	455	—	—	—	—	—	—
20x16	0.80	0.70	14.00	18.00	526	—	—	—	—	—	—
20x18	0.80	0.75	14.00	18.00	585	—	—	—	—	—	—
20x20	0.80	0.80	14.00	18.00	598	—	—	—	14.00	18.00	693
24x6	0.89	0.55	15.00	19.00	392	15.00	19.00	406	—	—	—
24x8	0.89	0.60	15.00	19.00	424	15.00	19.00	432	—	—	—
24x10	0.89	0.68	15.00	19.00	464	—	—	—	—	—	—
24x12	0.89	0.75	15.00	19.00	471	15.00	19.00	572	15.00	19.00	560
24x14	0.89	0.66	15.00	19.00	550	—	—	—	—	—	—
24x16	0.89	0.70	15.00	19.00	581	15.00	19.00	720	—	—	—
24x18	0.89	0.75	15.00	22.00	584	15.00	19.00	655	—	—	—
24x20	0.89	0.80	15.00	22.00	638	—	—	—	—	—	—
24x24	0.89	0.89	15.00	22.00	788	22.00	22.00	936	15.00	22.00	898
30x6	1.03	0.55	18.00	23.00	680	25.00	19.00	710	—	—	—
30x8	1.03	0.60	18.00	23.00	688	—	—	—	—	—	—
30x12	1.03	0.75	18.00	23.00	758	—	—	—	—	—	—





TERMINAL CITY IRON WORKS LTD.

COMPACT MECHANICAL JOINT FITTINGS | ANSI / AWWA C153 / A21.53



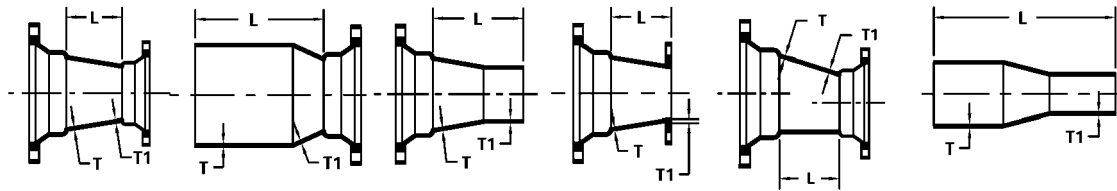
MJ REDUCERS

SIZE	T	T1	MJ X MJ R		MJ X LEB		MJ X SEB		MJ X FL		FL X MJ		PE X PE	
			MJR		MJRL		MJRS		MJFR		MJRF		MJRP	
			L	Wt.	L	Wt.	L	Wt.	L	Wt.	L	Wt.	L	Wt.
3x2	0.48	0.39	6.00	24	14.00	12	14.00	23	6.00	—	6.00	—	—	—
4x2	0.52	0.39	7.00	35	15.00	16	15.00	14	7.00	—	7.00	—	—	—
4x3	0.52	0.48	7.00	19	15.00	18	15.00	17	7.00	20	7.00	—	14	14
6x2	0.55	0.39	9.00	47	17.00	—	17.00	—	9.00	—	9.00	—	—	—
6x3	0.55	0.48	9.00	24	17.00	26	17.00	25	9.00	—	9.00	—	15	23
6x4	0.55	0.52	9.00	25	17.00	23	17.00	26	9.00	29	9.00	—	15	22
8x4	0.60	0.52	11.00	35	19.00	34	19.00	33	11.00	—	11.00	—	16	36
8x6	0.60	0.55	11.00	38	19.00	32	19.00	35	11.00	51	11.00	70	15	36
10x4	0.68	0.52	12.00	46	20.00	42	20.00	44	12.00	—	12.00	—	—	—
10x6	0.68	0.55	12.00	54	20.00	46	20.00	46	12.00	—	12.00	—	16	50
10x8	0.68	0.60	12.00	50	20.00	50	20.00	49	12.00	—	12.00	—	15	53
12x4	0.75	0.52	14.00	65	22.00	79	22.00	62	14.00	81	14.00	—	20	62
12x6	0.75	0.55	14.00	63	22.00	60	22.00	65	14.00	—	14.00	—	18	56
12x8	0.75	0.60	14.00	62	22.00	62	22.00	61	14.00	85	14.00	—	16	57
12x10	0.75	0.68	14.00	64	22.00	64	22.00	61	14.00	—	14.00	—	15	60
14x6	0.66	0.55	16.00	110	24.00	88	24.00	146	16.00	—	16.00	—	—	—
14x8	0.66	0.60	16.00	110	24.00	87	24.00	—	16.00	—	16.00	—	—	—
14x10	0.66	0.68	16.00	100	24.00	92	24.00	103	16.00	—	16.00	—	—	—
14x12	0.66	0.75	16.00	97	24.00	96	24.00	115	16.00	155	16.00	—	—	—
16x6	0.70	0.55	18.00	145	26.00	148	26.00	230	18.00	—	18.00	—	—	—
16x8	0.70	0.60	18.00	138	26.00	140	26.00	250	18.00	—	18.00	—	—	—
16x10	0.70	0.68	18.00	118	26.00	123	26.00	—	18.00	—	18.00	—	—	—
16x12	0.70	0.75	18.00	118	26.00	108	26.00	200	18.00	189	18.00	—	18.3	122
16x14	0.70	0.66	18.00	138	26.00	130	26.00	—	18.00	—	18.00	—	—	—



TERMINAL CITY IRON WORKS LTD.

COMPACT MECHANICAL JOINT FITTINGS | ANSI / AWWA C153 / A21.53



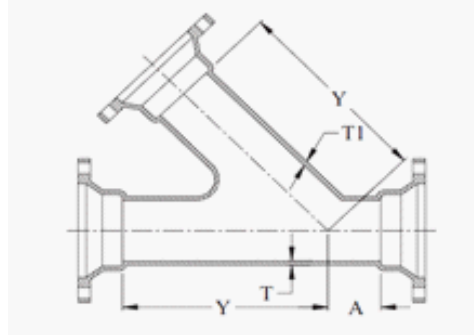
MJ REDUCERS

SIZE	T	T1	MJ X MJ R		MJ X LEB		MJ X SEB		MJ X FL		FL X MJ		PE X PE	
			MJR		MJRL		MJRS		MJFR		MJRF		MJRP	
			L	Wt.	L	Wt.	L	Wt.	L	Wt.	L	Wt.	L	Wt.
18x8	0.75	0.60	19.00	162	27.00	177	27.00	158	19.00	200	19.00	—	—	—
18x10	0.75	0.68	19.00	186	27.00	175	27.00	163	19.00	—	19.00	—	—	—
18x12	0.75	0.75	19.00	167	27.00	175	27.00	141	19.00	322	19.00	—	—	—
18x14	0.75	0.66	19.00	192	27.00	161	27.00	161	19.00	—	19.00	—	—	—
18x16	0.75	0.70	19.00	197	27.00	177	27.00	164	19.00	—	19.00	—	—	—
20x6	0.80	0.55	20.00	220	28.00	—	28.00	—	20.00	—	20.00	—	—	—
20x8	0.80	0.60	20.00	192	28.00	—	28.00	—	20.00	—	20.00	—	—	—
20x10	0.80	0.68	20.00	215	28.00	183	28.00	230	20.00	—	20.00	—	—	—
20x12	0.80	0.75	20.00	200	28.00	225	28.00	222	20.00	—	20.00	—	—	—
20x14	0.80	0.66	20.00	210	28.00	213	28.00	190	20.00	—	20.00	—	—	—
20x16	0.80	0.70	20.00	215	28.00	224	28.00	185	20.00	—	20.00	—	—	—
20x18	0.80	0.75	20.00	206	28.00	204	28.00	175	20.00	—	20.00	—	—	—
24x12	0.89	0.75	24.00	320	32.00	265	32.00	303	24.00	355	24.00	—	—	—
24x14	0.89	0.66	24.00	319	32.00	—	32.00	259	24.00	—	24.00	—	—	—
24x16	0.89	0.70	24.00	318	32.00	265	32.00	268	24.00	—	24.00	—	—	—
24x18	0.89	0.75	24.00	310	32.00	—	32.00	275	24.00	—	24.00	—	—	—
24x20	0.89	0.80	24.00	308	32.00	—	32.00	272	24.00	—	24.00	—	—	—
30x16	1.03	0.70	30.00	698	38.00	—	38.00	—	30.00	—	30.00	—	—	—
30x18	1.03	0.75	30.00	660	38.00	—	38.00	—	30.00	—	30.00	—	—	—



TERMINAL CITY IRON WORKS LTD.

COMPACT MECHANICAL JOINT FITTINGS | ANSI / AWWA C153 / A21.53

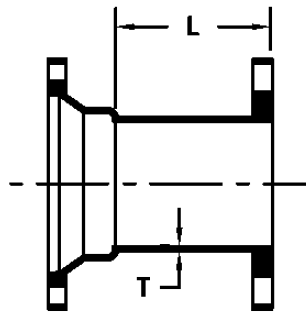


MJ LATERALS 45 DEGREE					
SIZE	MJL				
	T	T1	A	Y	Wt.
3X3	0.33	0.33	2.50	10.00	34
4X4	0.34	0.34	2.50	12.00	44
6X4	0.36	0.34	1.50	14.50	54
6X6	0.36	0.36	3.00	14.50	92
8X4	0.38	0.34	0.50	17.50	95
8X6	0.38	0.36	2.00	17.50	114
8X8	0.38	0.38	3.50	17.50	118
10X4	0.40	0.34	0.00	20.50	112
10X6	0.40	0.36	1.00	20.50	128
10X8	0.40	0.38	2.50	20.50	158
10X10	0.40	0.40	3.50	20.50	194
12X4	0.42	0.34	0.00	24.50	158
12X6	0.42	0.36	1.50	24.50	203
12X8	0.42	0.38	1.50	24.50	201
12X10	0.42	0.4	3.00	24.50	208
12X12	0.42	0.42	4.50	24.50	268
14X14	0.47	0.47	6.00	27.00	447
16X6	0.50	0.36	0.00	30.00	300
16X8	0.50	0.38	0.50	30.00	349
16X12	0.50	0.42	3.50	30.00	466
16X16	0.50	0.50	6.50	30.00	578
18X18	0.75	0.75	7.00	32.00	672
24X12	0.89	0.75	9.00	40.50	895
24X16	0.89	0.75	9.00	40.50	988
24X18	0.89	0.75	9.00	40.50	970
24X24	0.89	0.89	9.00	40.50	1252



TERMINAL CITY IRON WORKS LTD.

COMPACT MECHANICAL JOINT FITTINGS | ANSI / AWWA C153 / A21.53



MJ X FL ADAPTERS			
SIZE	MJFA		
	T	L	Wt.
3	0.33	3.50	16
4	0.34	3.50	22
6	0.36	3.50	32
8	0.38	3.50	49
10	0.40	4.00	70
12	0.42	4.00	99
14	0.47	5.00	138
16	0.50	5.00	158
18	0.54	5.00	221
20	0.57	5.00	252
24	0.61	5.00	324
30	0.66	7.00	540

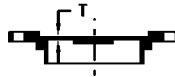


TERMINAL CITY IRON WORKS LTD.

COMPACT MECHANICAL JOINT FITTINGS | ANSI / AWWA C153 / A21.53



MJ SOLID & TAPPED CAPS				
SIZE	T	MJC	MJCT	
		Wt.	Tap	Wt.
2	0.40	5	2"	6
3	0.46	8	2"	9
4	0.36	9	2"	12
6	0.44	16	2"	17
8	0.46	26	2"	25
10	0.50	32	2"	38
12	0.50	48	2"	59
14	0.55	72	2"	80
16	0.56	98	2"	90
18	0.60	116	2"	125
20	0.66	129	2"	156
24	0.68	171	2"	185
30	0.82	450	2"	386
36	1.00	—	2"	—
42	1.00	834	2"	—

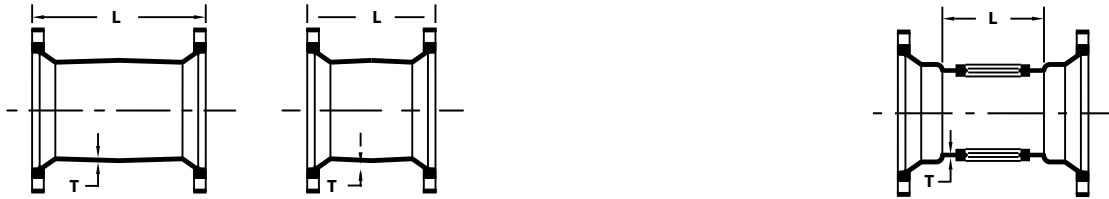


MJ SOLID & TAPPED PLUGS				
SIZE	T	MJC	MJCT	
		Wt.	Tap	Wt.
2	0.40	6	2"	5
3	0.46	9	2"	9
4	0.36	10	2"	10
6	0.44	20	2"	20
8	0.46	30	2"	30
10	0.50	44	2"	44
12	0.50	53	2"	53
14	0.55	77	2"	77
16	0.56	101	2"	101
18	0.60	126	2"	126
20	0.66	139	2"	139
24	0.68	181	2"	181
30	0.82	216	2"	—
36	1.00	—	2"	—
42	1.00	563	2"	—



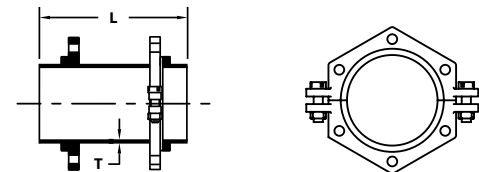
TERMINAL CITY IRON WORKS LTD.

COMPACT MECHANICAL JOINT FITTINGS | ANSI / AWWA C153 / A21.53



MJ x MJ SLEEVES					
SIZE	T	LONG		SHORT	
		MJSL		MJSS	
		L	Wt.	L	Wt.
2	0.39	12.00	19	7.50	—
3	0.48	12.00	18	7.50	13
4	0.52	12.00	22	7.50	18
6	0.55	12.00	36	7.50	28
8	0.60	12.00	46	7.50	34
10	0.68	12.00	66	7.50	52
12	0.75	12.00	81	7.50	61
14	0.66	15.00	140	9.50	80
16	0.70	15.00	168	9.50	93
18	0.75	15.00	215	9.50	128
20	0.80	15.00	238	9.50	191
24	0.89	15.00	294	9.50	238
30	1.03	24.00	609	15.00	—

MJ X MJ TAPPED TEE				
SIZE	MJTT			
	T	L	TAP	Wt.
3x3	0.48	6.00	2"	27
4x4	0.52	6.00	2"	30
6x6	0.55	6.00	2"	40
8x8	0.60	6.00	2"	59
10x10	0.68	6.00	2"	75
12x12	0.75	6.00	2"	92
14x14	0.66	6.00	2"	—
16x16	0.70	6.00	2"	164



MJ X SW HYDRANT ADAPTERS			
SIZE	MJHA		
	T	L	Wt.
4x13	0.52	13	35
6x13	0.55	13	53
6x18	0.55	18	70
6x24	0.55	24	79
6x36	0.55	36	96
6x48	0.55	48	136
8x13	0.60	13	70
12x13	0.75	13	127



TERMINAL CITY IRON WORKS LTD.

COMPACT MECHANICAL JOINT FITTINGS | ANSI / AWWA C153 / A21.53

MECHANICAL JOINT ACCESSORIES

Fitting size	Quantity	C153 Bolt size	C110 Bolt size
4"	4	3/4 x 3 1/2	3/4 x 3 1/2
6"	6	3/4 x 3 1/2	3/4 x 3 1/2
8"	6	3/4 x 3 1/2	3/4 x 4
10"	8	3/4 x 3 1/2	3/4 x 4
12"	8	3/4 x 3 1/2	3/4 x 4
14"	10	3/4 x 4	3/4 x 4 1/2
16"	12	3/4 x 4	3/4 x 4 1/2
18"	12	3/4 x 4	3/4 x 4 1/2
20"	14	3/4 x 4	3/4 x 4 1/2
24"	16	3/4 x 4 1/2	3/4 x 5
30"	20	1 x 5 1/2	1 x 6
36"	24	1 x 5 1/2	1 x 6
42"	28	1 1/4 x 6	1 1/4 x 6 1/2
48"	32	1 1/4 x 6	1 1/4 x 6 1/2

ANSI/AWWA C600 Mechanical Joint Bolt Torque Range

Pipe size (in.)	Bolt size (in.)	Torque Range (ft-lbs)
4 - 24	3/4	75 - 90
30 - 36	1	100 - 120
42 - 48	1 1/4	120 - 150

Mechanical Joint gaskets available in Styrene - Butadiene (SBR) or Nitrile (NBR)
Type 304 Stainless Steel Tee Head bolts/nuts are available upon request.