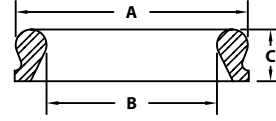
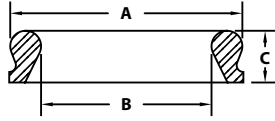




TERMINAL CITY IRON WORKS LTD.

PUSH-ON JOINT FULL BODY DUCTILE IRON FITTINGS | ANSI / AWWA C110



PO GASKETS			
NOM. SIZE	A	B	C
4	5.74	4.54	1.00
6	7.86	6.64	1.00
8	10.15	8.73	1.21
10	12.22	10.80	1.30
12	14.34	12.92	1.30
14	16.90	15.90	1.65
16	19.01	17.01	1.65
18	21.13	19.13	1.65
20	23.25	21.25	1.65
24	27.48	25.48	1.65

PO TRANSITION GASKETS			
NOM. SIZE	A	B	C
4	5.74	4.18	1.00
6	7.86	6.31	1.10
8	10.15	8.32	1.29
10	12.22	10.30	1.36
12	14.34	12.70	1.45

Standard push-on gaskets are Styrene-Butadiene (SBR) and also are available in Nitrile (NBR).