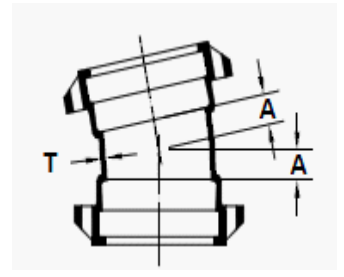
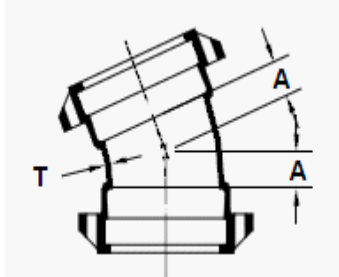
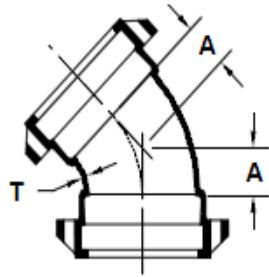
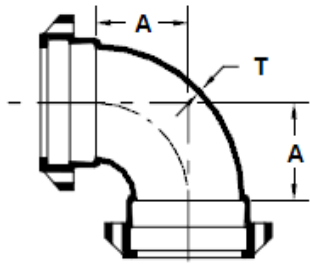




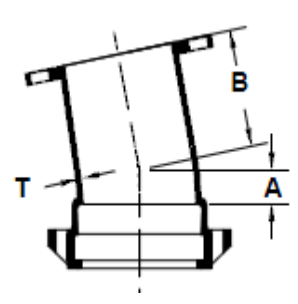
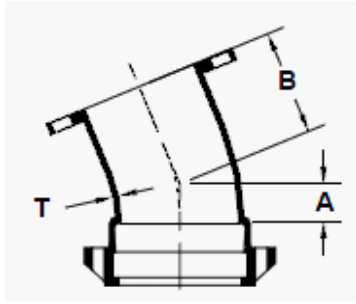
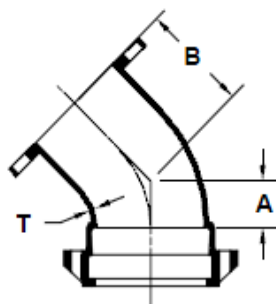
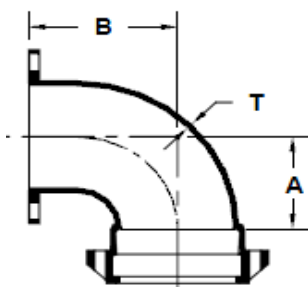
TERMINAL CITY IRON WORKS LTD.

PUSH-ON FULL BODY FITTINGS | ANSI/AWWA C110/ A21.10



PO X PO BENDS

SIZE	T	PODB		PODB		PODB		PODB	
		90°		45°		22 1/2°		11 1/4°	
		A	Wt.	A	Wt.	A	Wt.	A	Wt.
4	0.52	6.50	57	4.00	—	4.00	—	4.00	—
6	0.55	8.00	110	5.00	85	5.00	88	5.00	86
8	0.60	9.00	154	5.50	132	5.50	137	5.50	133
10	0.68	11.00	228	6.50	196	6.50	200	6.50	216
12	0.75	12.00	336	7.50	278	7.50	275	7.50	275
14	0.66	14.00	379	7.50	309	7.50	325	7.50	321
16	0.70	15.00	530	8.00	434	8.00	422	8.00	429
18	0.75	16.50	669	8.50	503	8.50	520	8.50	518
20	0.80	18.00	—	9.50	—	9.50	—	9.50	—
24	0.89	22.00	1400	11.00	1100	11.00	1050	11.00	1040



PO X FL BENDS

SIZE	T	PODB		PODB		PODB		PODB	
		90°		45°		22 1/2°		11 1/4°	
		A	Wt.	A	Wt.	A	Wt.	A	Wt.
4	0.52	6.50	—	4.00	—	4.00	—	4.00	—
6	0.55	8.00	—	5.00	71	5.00	—	5.00	—
8	0.60	9.00	—	5.50	110	5.50	—	5.50	—
10	0.68	11.00	—	6.50	185	6.50	—	6.50	—
12	0.75	12.00	—	7.50	262	7.50	—	7.50	—
14	0.66	14.00	—	7.50	—	7.50	—	7.50	—
16	0.70	15.00	—	8.00	—	8.00	—	8.00	—
18	0.75	16.50	—	8.50	—	8.50	—	8.50	—
20	0.80	18.00	—	9.50	—	9.50	—	9.50	—
24	0.89	22.00	—	11.00	—	11.00	—	11.00	—