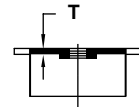
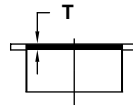
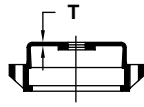
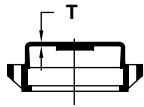




TERMINAL CITY IRON WORKS LTD.

COMPACT PUSH-ON FITTINGS | ANSI / AWWA C153 / A21.53



PO SOLID & TAPPED CAPS					PO SOLID & TAPPED PLUGS				
SIZE	T	POC	POCT		SIZE	T	POC	POCT	
		Wt	Tap	Wt			Wt	Tap	Wt
4	0.37	13	2"	16	4	0.37	10	2"	14
6	0.39	20	2"	25	6	0.39	16	2"	19
8	0.41	32	2"	37	8	0.41	24	2"	29
10	0.44	40	2"	50	10	0.44	40	2"	42
12	0.46	58	2"	86	12	0.46	43	2"	52
14	0.60	111	2"	111	14	0.60	89	2"	—
16	0.60	145	2"	140	16	0.60	108	2"	—

Note: Tapping holes larger than 2" in a flat cap or plug can reduce the strength of the fitting.